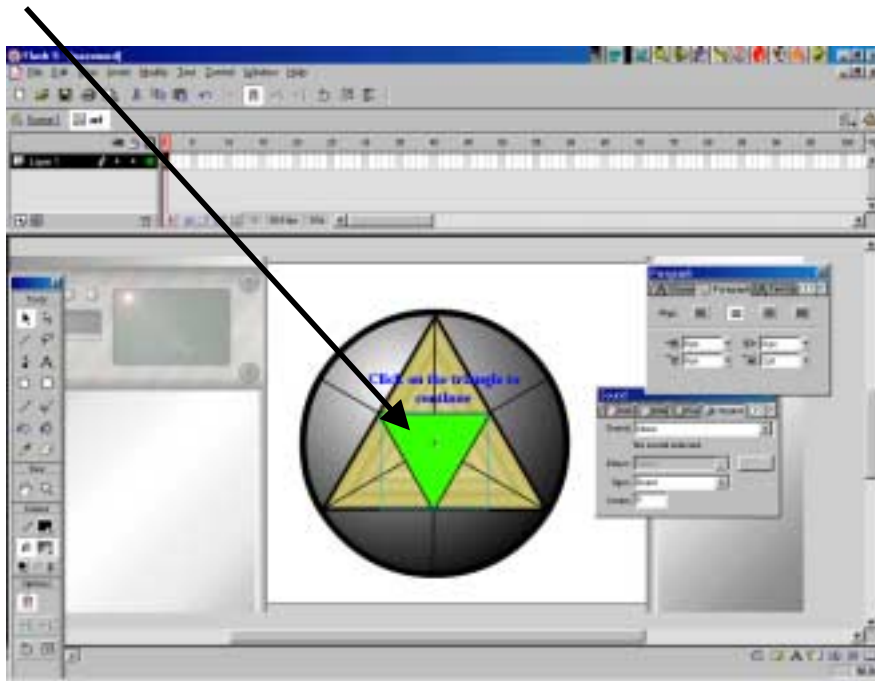
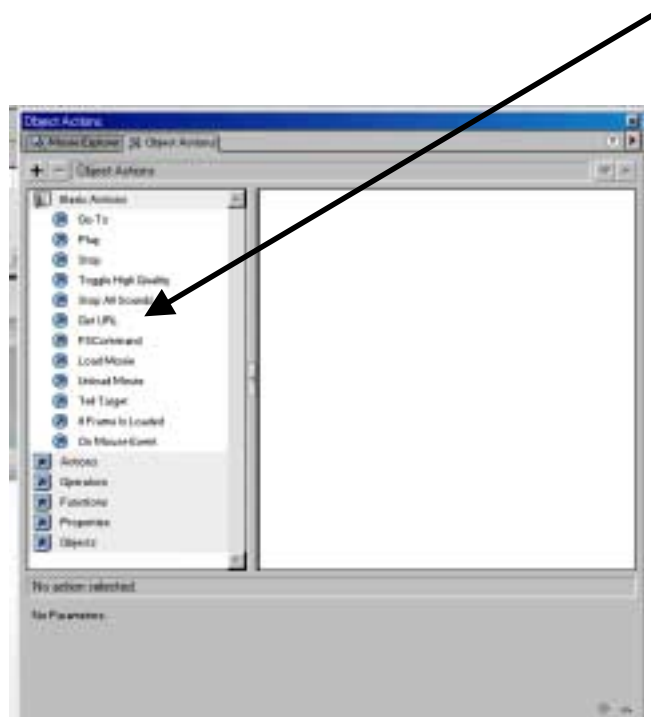
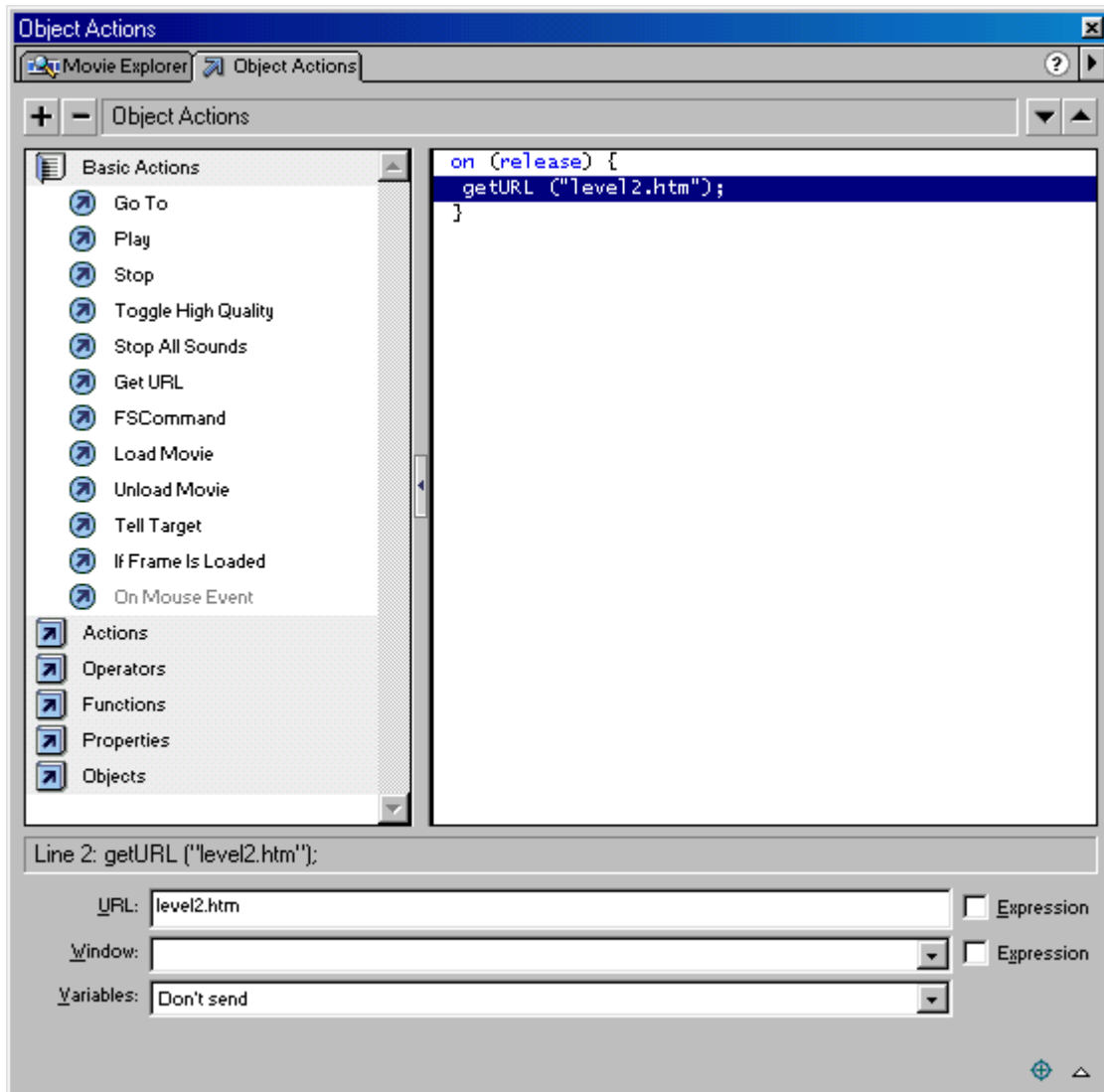


To change the link to the next page, click on the green triangle button to select it.



Click on the Objects Actions dialogue box and then on 'Get URL'

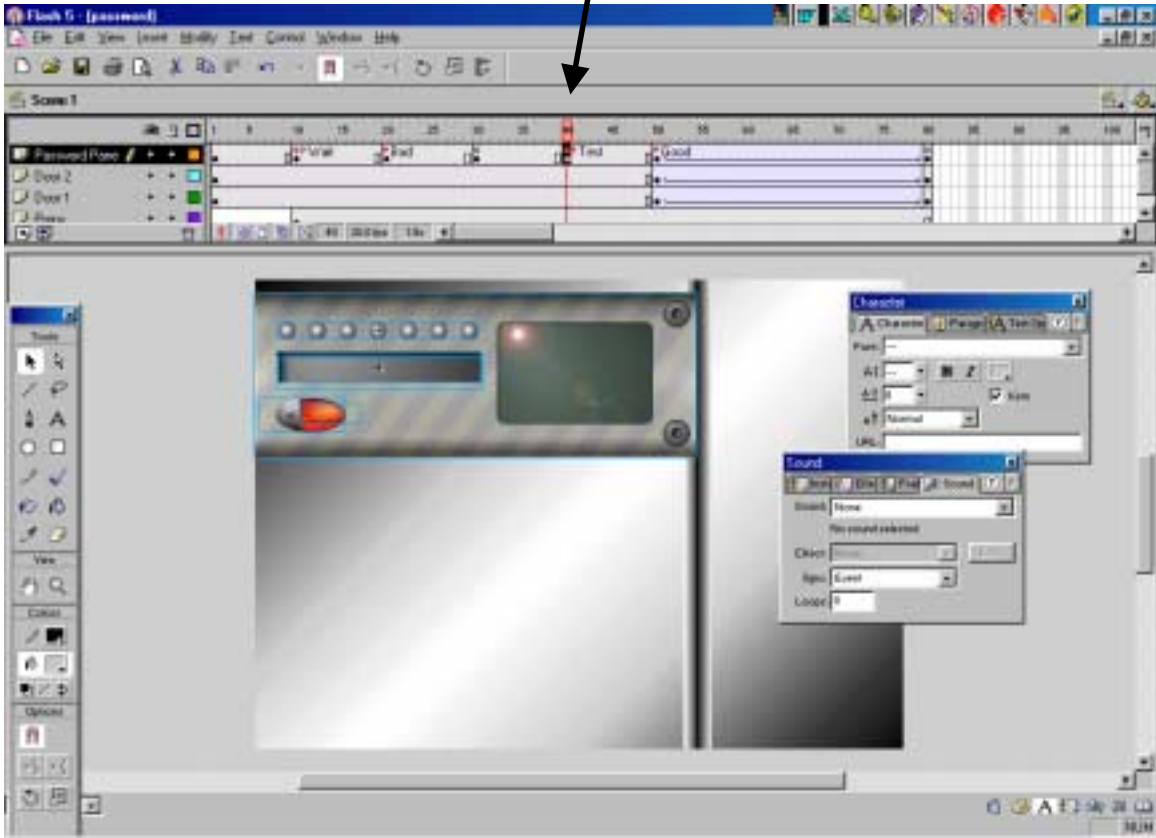




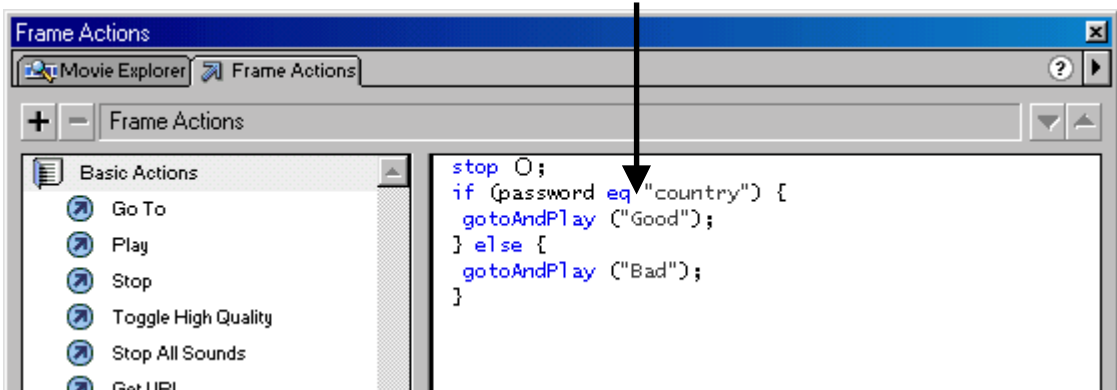
Change the link from level2.htm to your own link. Absolute links always work correctly so use the full correct address eg <http://www.mysite.com/box/level2.htm>

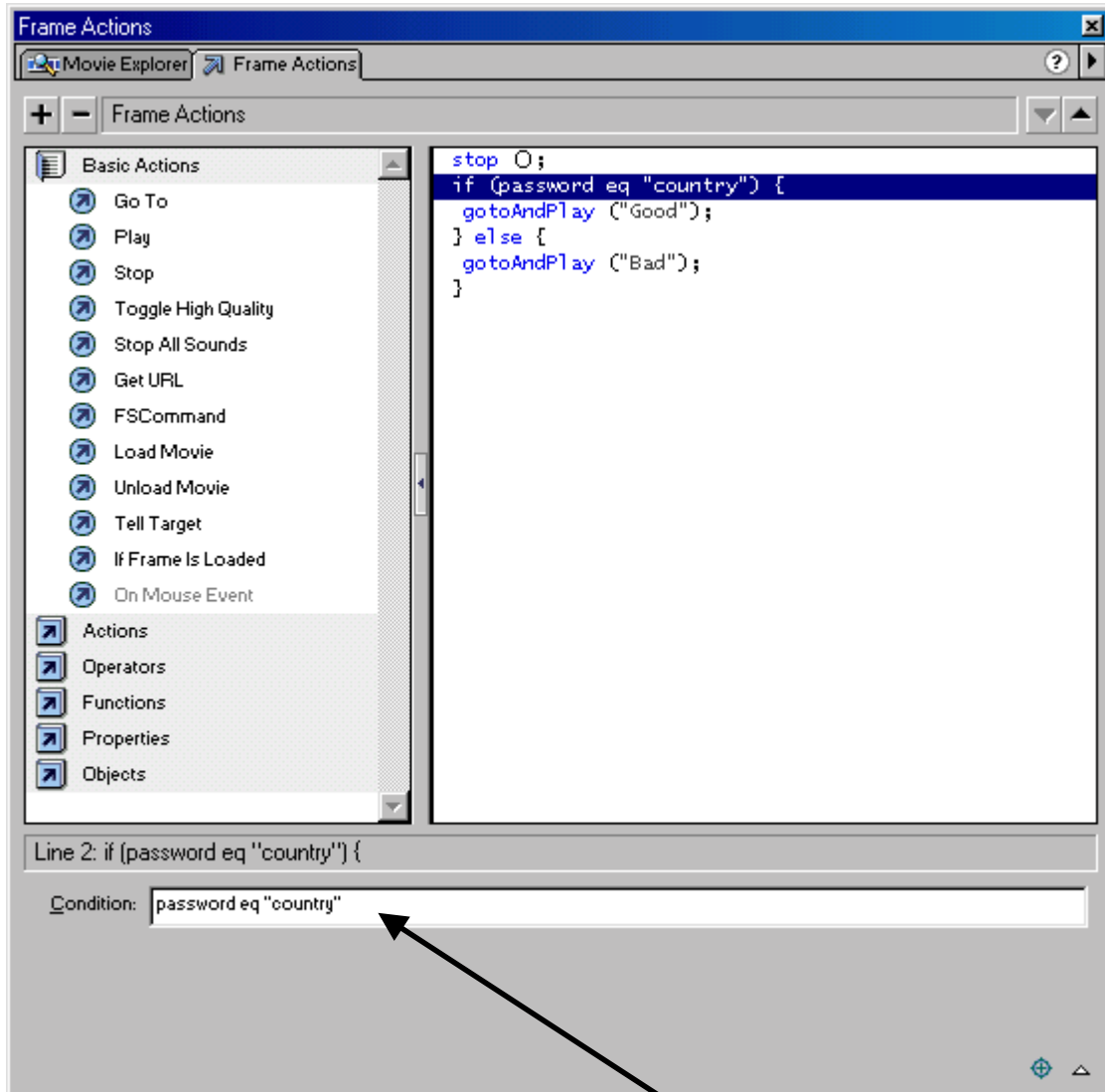
Always save your password.swf file and your html in the same folder to ensure there are no problems.

To change the password click on the 'Test' frame



In the frame actions box click on the password to change it





Change the password to your own in the 'Condition' box